

1 Features

- Feed-through, high current range, excellent insertion loss in RF frequency
- CE approved, widely used in communication, navigation and other electronic equipment
- Customization accepted

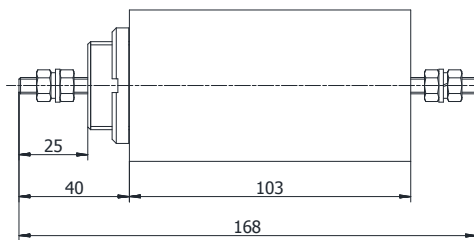
2 Technical Data

| Type         | Rated Voltage          | Rated Current | Hi-Pot Test Voltage |
|--------------|------------------------|---------------|---------------------|
|              |                        |               | Line-Ground         |
| DNF07-R-40A  | 250V~50/60Hz or 400VDC | 40A           | 1633VDC,2s          |
| DNF07-R-100A | 440V~50/60Hz or 750VDC | 100A          | 2500VDC,2s          |
| DNF07-R-200A | 440V~50/60Hz or 750VDC | 200A          | 2500VDC,2s          |
| DNF07-R-300A | 440V~50/60Hz or 750VDC | 300A          | 2500VDC,2s          |
| DNF07-R-400A | 250V~50/60Hz           | 400A          | 1633VDC,2s          |

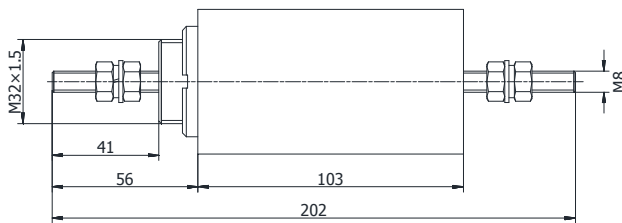
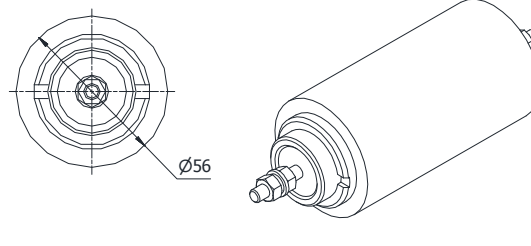
3 Electrical Schematic



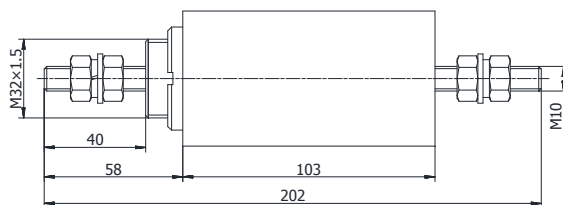
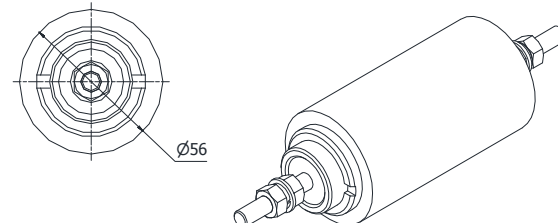
4 Dimensions (Unit:mm)



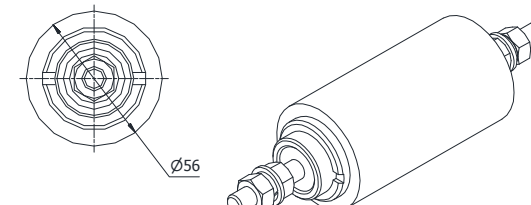
DNF07-R-40A

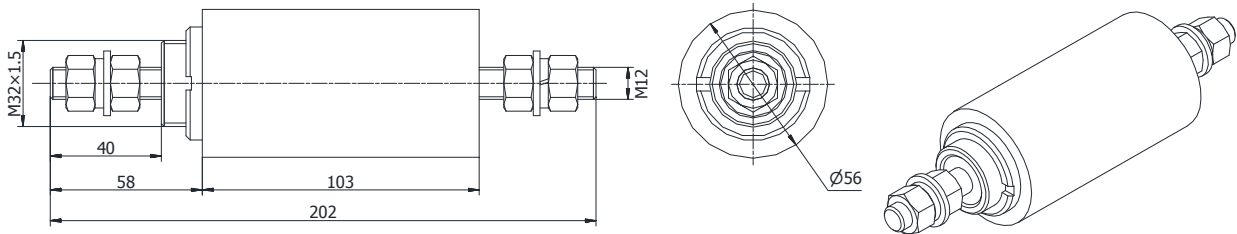


DNF07-R-100A

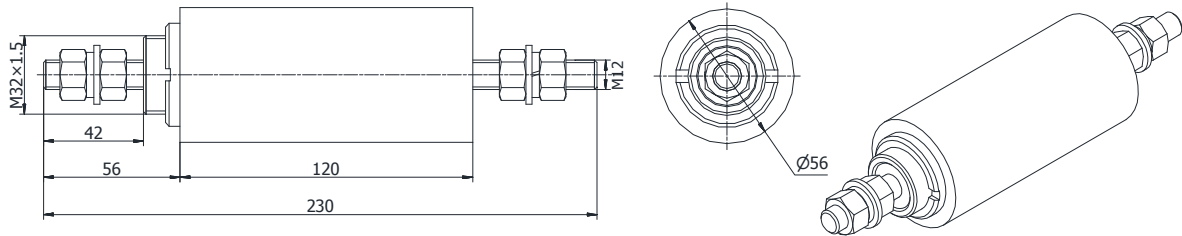


DNF07-R-200A



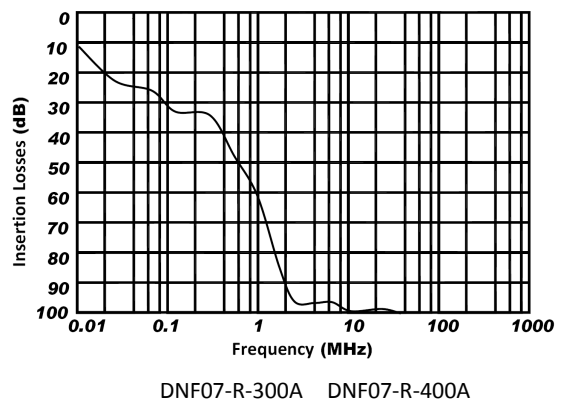
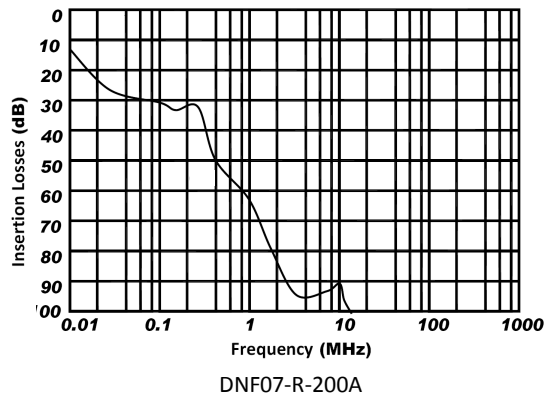
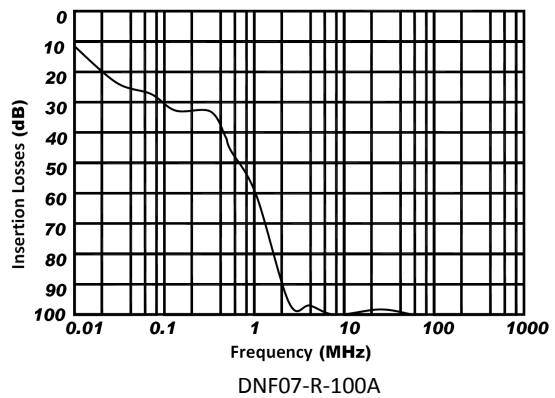
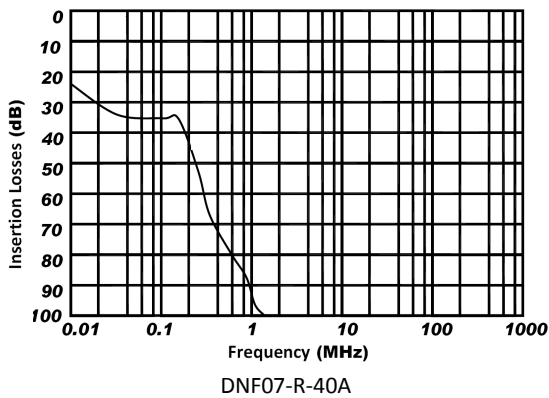


DNF07-R-300A



DNF07-R-400A

5 Typical Insertion Losses In 50Ω System:



6 Installation Instructions

- 1) Filter should be installed on power input of equipment
- 2) The input wiring and the output wiring should be strictly separated