

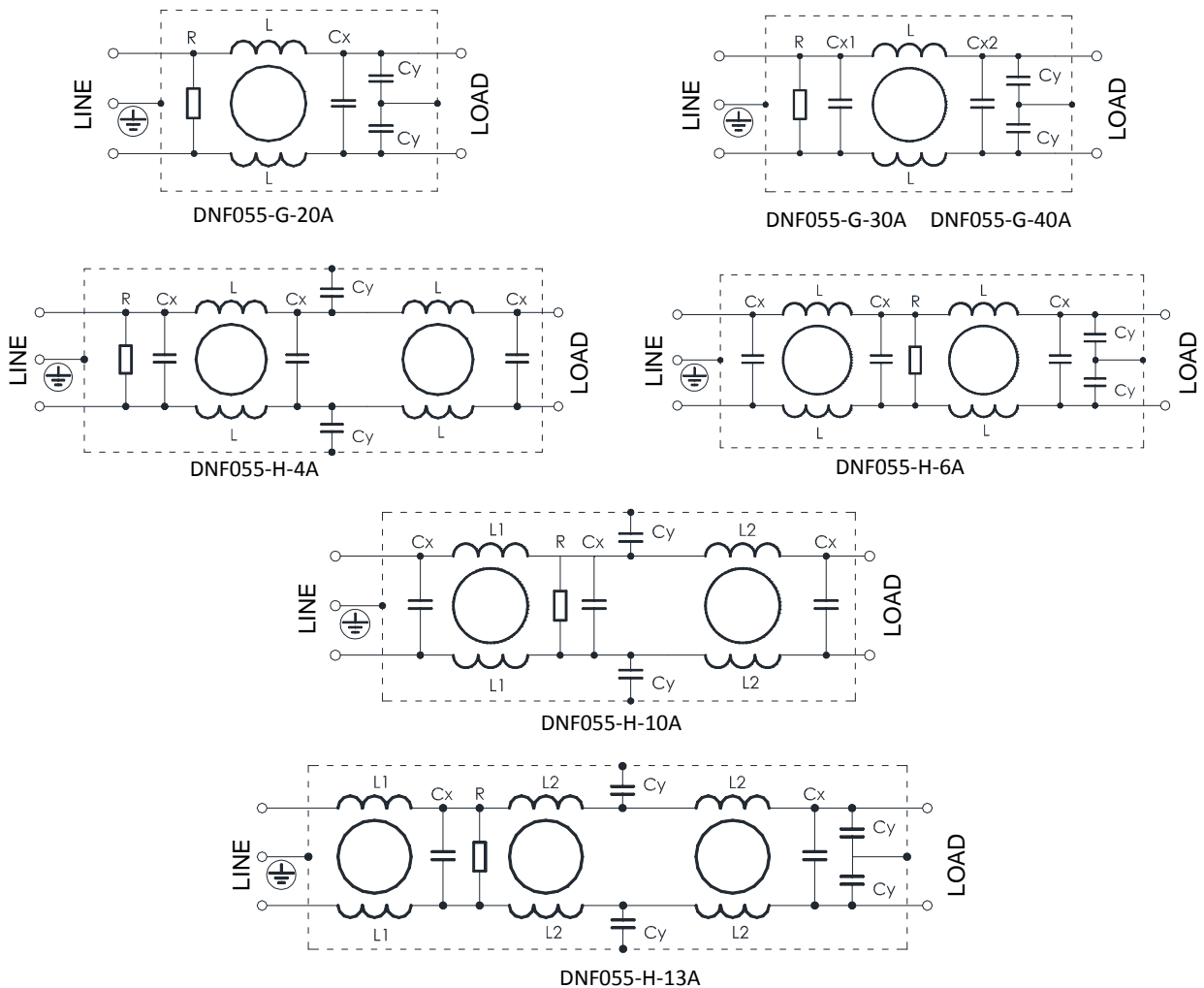
1 Features

- Excellent insertion losses
- Applicable to the Switching Power Supplies, UPS and other industrial automatic- control equipments
- CE approved
- Customization accepted

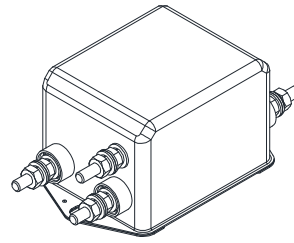
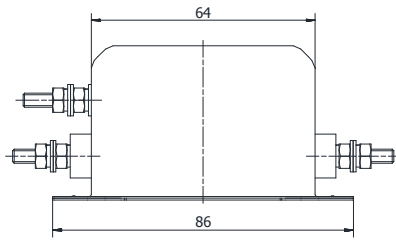
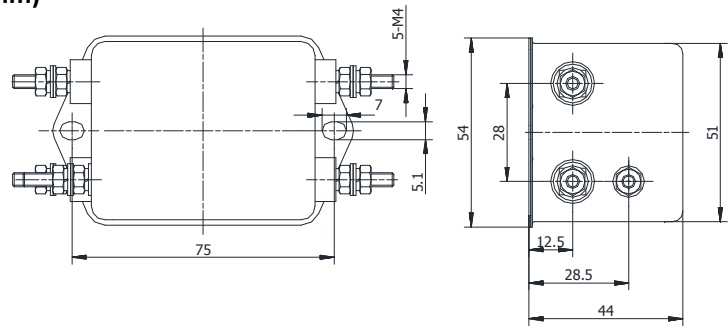
2 Technical Parameters

Type	Rated Voltage	Rated Current	Hi-Pot Test Voltage		Cx(μF) ± 10%	Cy(nF) ± 20%	L(mH) -30%~+50%	R(MΩ) ± 10%	Leakage Current 250V~50Hz
			Line-Line	Line-Ground					
DNF055-G-20A	250V-50/60Hz	20A	1800VDC,2s	1800V-50/60Hz,2s	3.0	10.0	1.2	3.3	<2.3mA
DNF055-G-30A	250V-50/60Hz	30A	1800VDC,2s	1800V-50/60Hz,2s	Cx1=0.22 Cx2=0.47	10.0	0.6	1.0	<2.3mA
DNF055-G-40A	250V-50/60Hz	40A	1800VDC,2s	1800V-50/60Hz,2s	Cx1=0.22 Cx2=0.47	10.0	0.6	1.0	<2.3mA
DNF055-H-4A	250V-50/60Hz	4A	1800VDC,2s	1800V-50/60Hz,2s	0.47	4.7	16.0	1.0	<1.1mA
DNF055-H-6A	250V-50/60Hz	6A	1800VDC,2s	1800V-50/60Hz,2s	0.47	2.2	11.0	1.0	<1.1mA
DNF055-H-10A	250V-50/60Hz	10A	1800VDC,2s	1800V-50/60Hz,2s	1.0	4.7	L1=11.0 L2=5.0	1.0	<1.1mA
DNF055-H-13A	250V-50/60Hz	13A	1800VDC,2s	1800V-50/60Hz,2s	0.47	2.2	L1=0.03 L2=4.0	1.0	<1.0mA

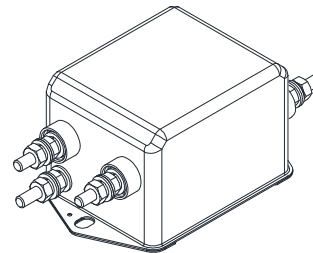
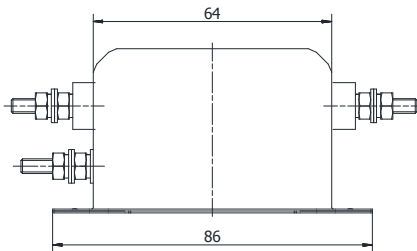
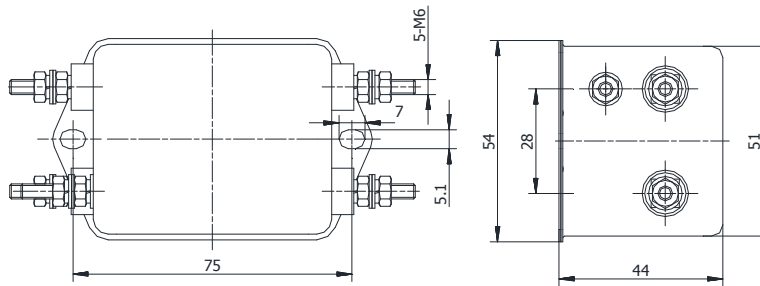
3 Electrical Schematic



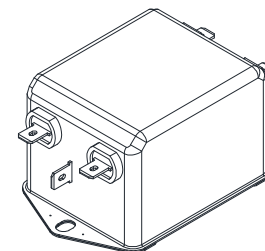
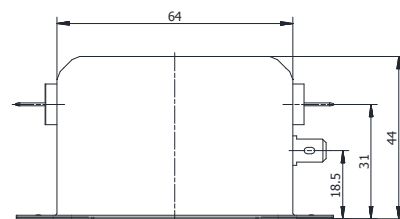
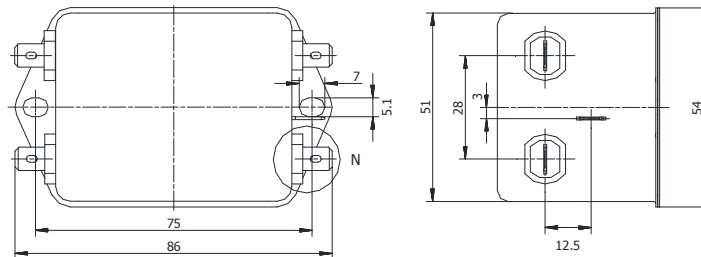
4 Dimensions (Unit: mm)



DNF055-G-20A DNF055-G-30A

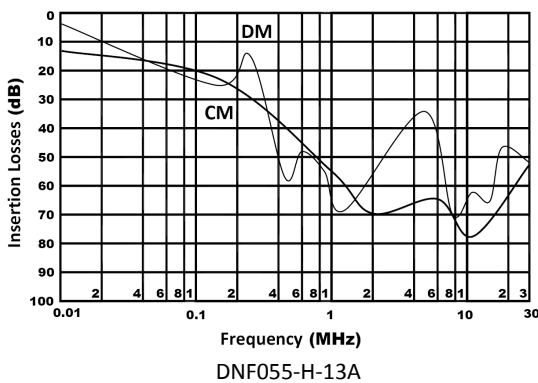
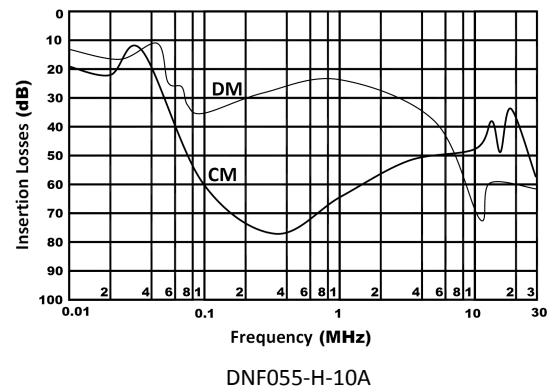
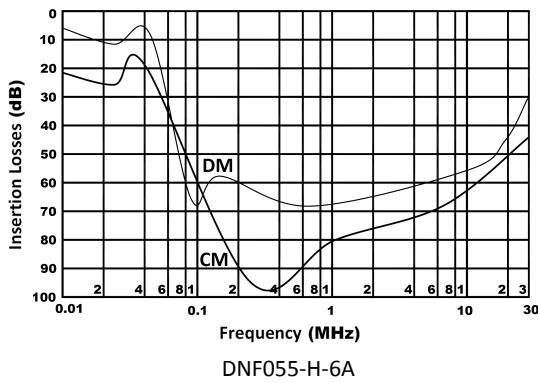
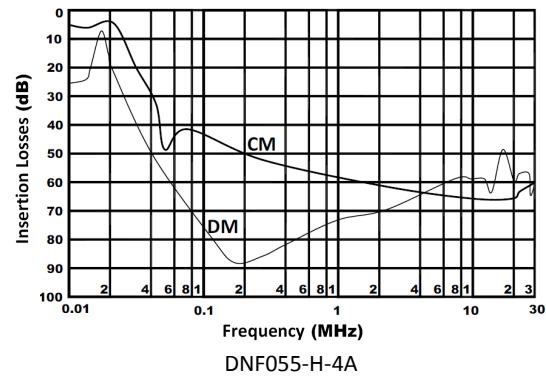
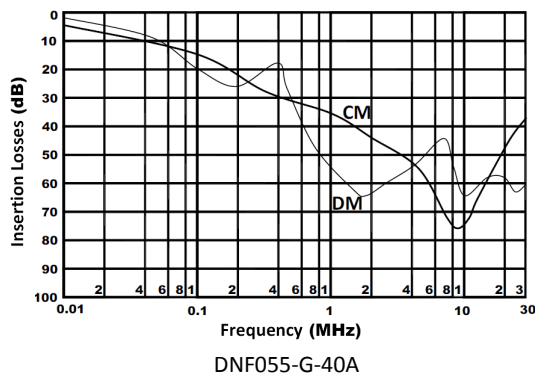
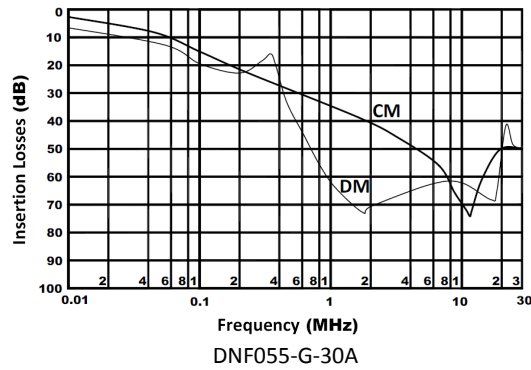
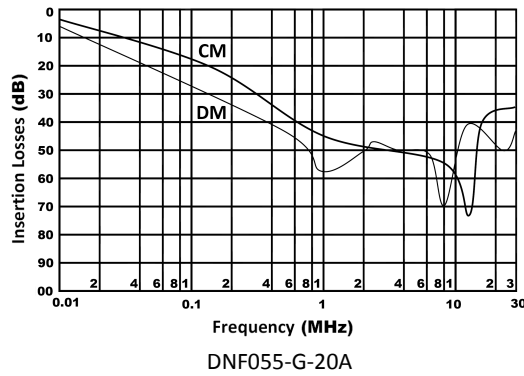


DNF055-G-40A



DNF055-H-4A DNF055-H-6A
DNF055-H-10A DNF055-H-13A

5 Typical Insertion Losses In 50Ω System: (CM-Common Mode DM-Different Mode)



6 Introduction of installation

- 1) Good electrical connection is needed between filter casing and equipment shell.
- 2) Connecting the filter's input and output according to the provision on the label of LINE and LOAD.
- 3) The input wiring and the output wiring should be strictly separated, cannot be bundled together.