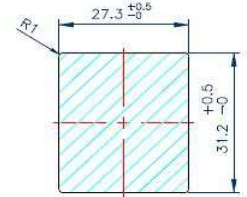
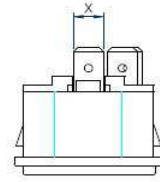


# POWER INLET 5x20MM FUSE HOLDER

## RF-2004-2.0

STANDART: IEC 320-1 C14  
RATING :10A 250V AC  
APPROVALS : UL/CSAVDE/DEMKO/  
NEMKO/SEMKO/FIMKO



PANEL CUTOUT DIMENSION TABLE

	Y	X	MODE
RF-2004-	2.0	6.3	
		6.3	
	2.5-	4.8	
		4.0	
	3.0	2.8	

