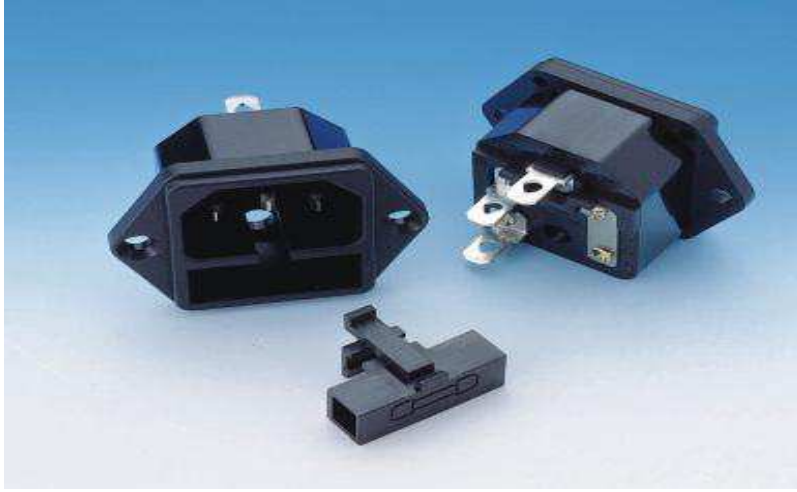
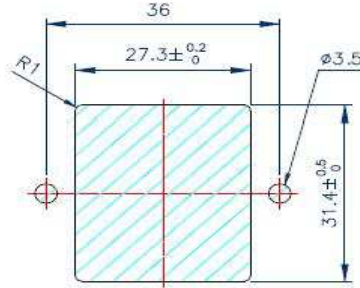
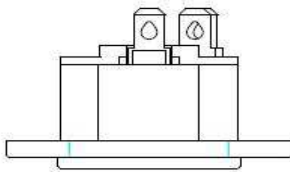


POWER INLET 5x20MM FUSE HOLDER

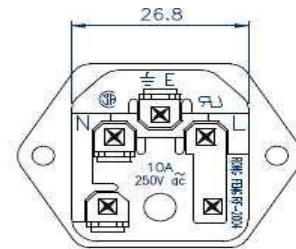
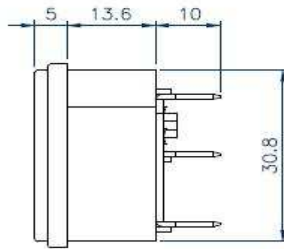
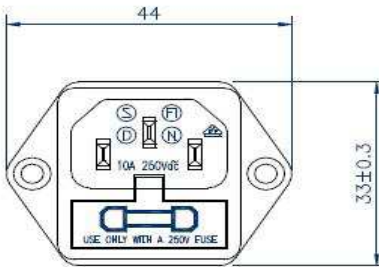
RF-2004-C



STANDART: IEC 320-1 C14
 RATING :15A 250V AC
 APPROVALS :UL/CSA
 RATING :10A 250V AC
 APPROVALS : UL/CSA/VDE/DEMKO/
 NEMKO/SEMKO/FIMKO



PANEL CUTOUT DIMENSION TABLE



RF-2004-C-	6.3	
	6.3	
	4.8	
	4.0	
	2.8	