

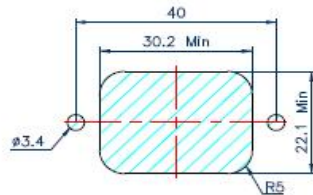
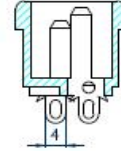
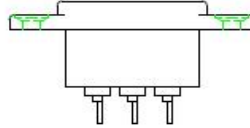
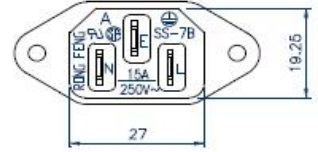
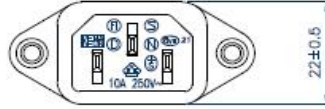
AC SOCKET



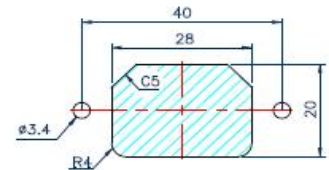
SS-7B-VDE

STANNDAAARD: IEC 320 C14
 RATING : 15A 250V AC
 APPROVALS : UL/CSA
 RATING : 10A 250V AC
 APPROVALS : VDE/DEMKO/NAMKO/
 SEV/SEMKO/FIMKO/KEMA/CCEE

	X	MODE
SS-7B-VDE-	4.8	
	4.0	



Mounting inlet flange at back of cover.



Mounting inlet flange in front of cover.